

The Russians are coming! Colonial Victoria's coastal defences

During the nineteenth century, Victoria constructed some of the most impressive coastal defences in Australia. This was fuelled by periodic 'Russian scares', rumours of war and fears of naval raids on the gold-rich colony.

Many records relating to Victoria's historic coastal defences are now in the national archival collection. These include original architectural drawings for the major fortifications guarding Port Phillip Bay and smaller artillery batteries along Victoria's south-west coast.

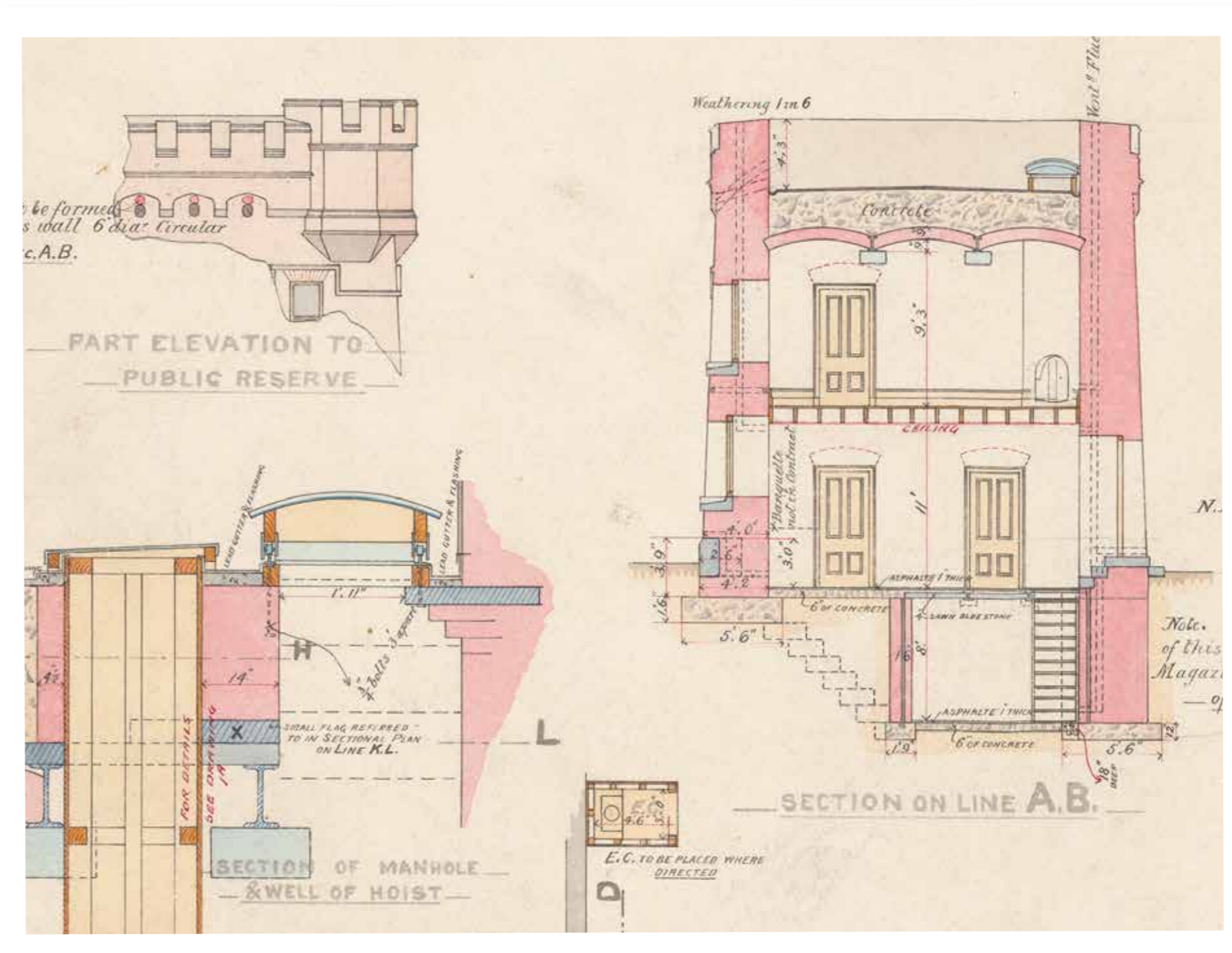


Image: The keep at Fort Queenscliff 1882
NAA: B3712, DRAWER 8 FOLDER 7 PART 1



DRAWING N° 1.

& Drawings in all

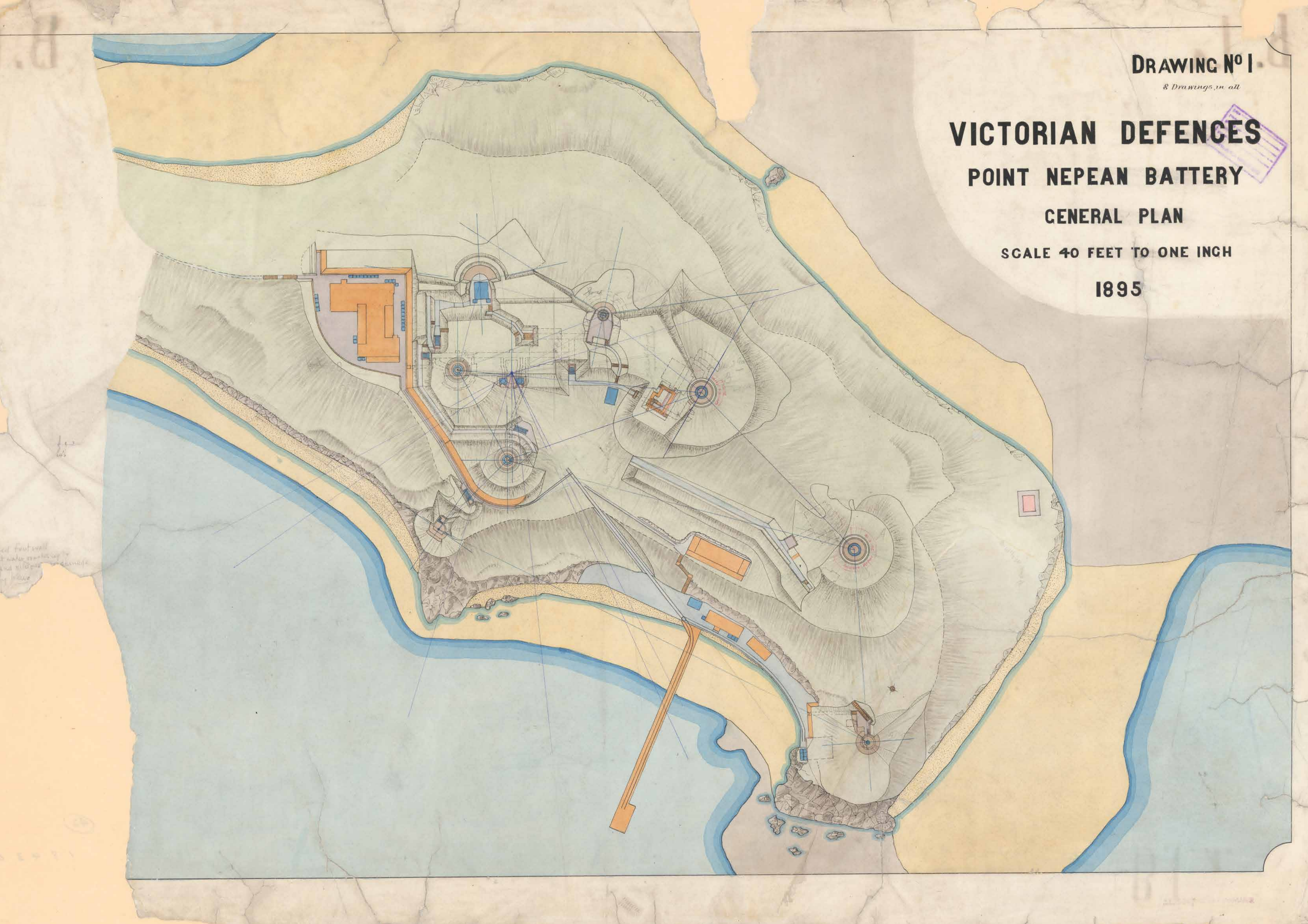
VICTORIAN DEFENCES

POINT NEPEAN BATTERY

GENERAL PLAN

SCALE 40 FEET TO ONE INCH

1895



VICTORIAN DEFENCES

POINT NEPEAN BATTERY

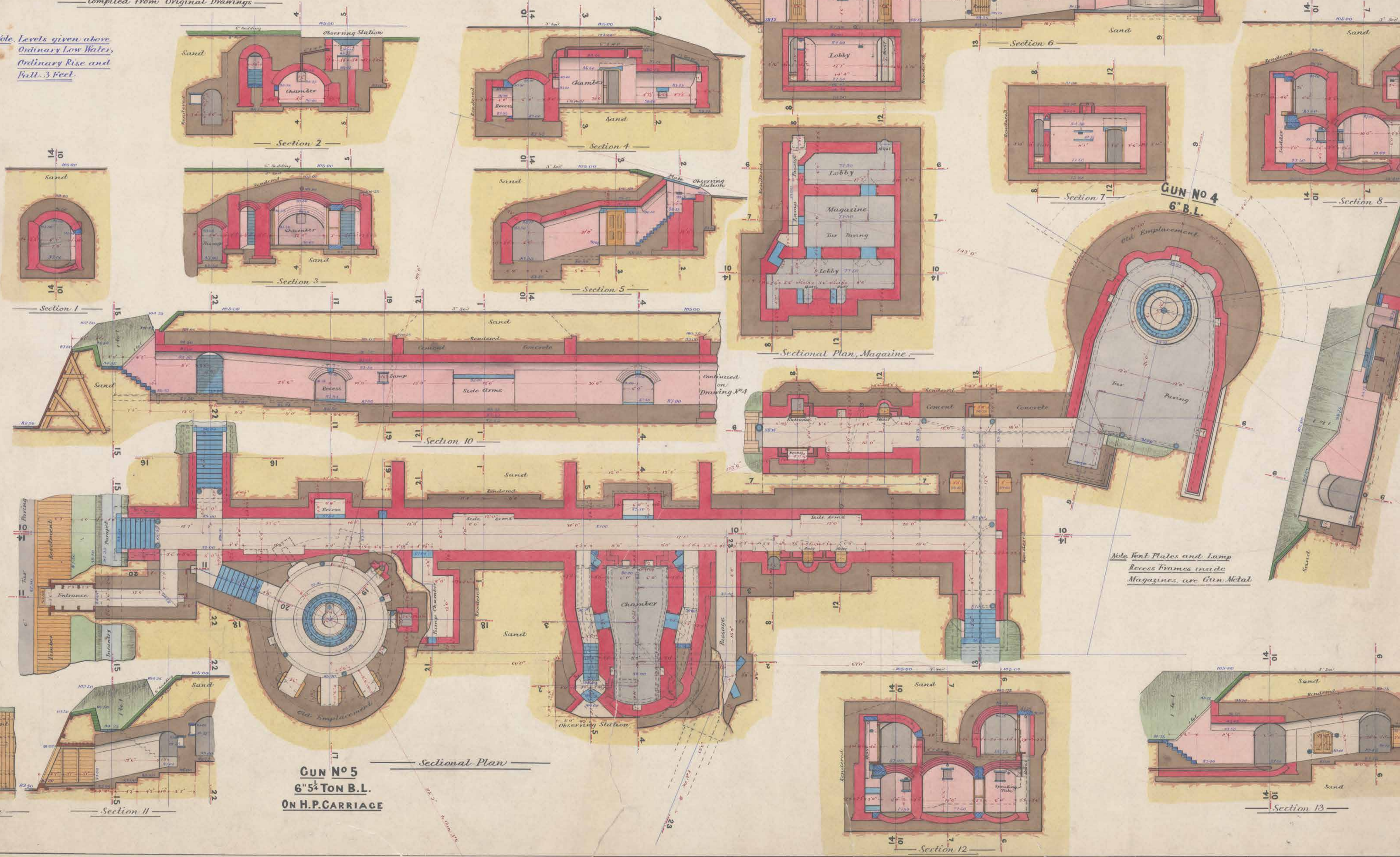
Compiled from Original Drawings

Note. Levels given above Ordinary Low Water, Ordinary Rise and Fall 3 Feet.

GUNS N^os 4 AND 5

SCALE 8 FEET TO ONE INCH

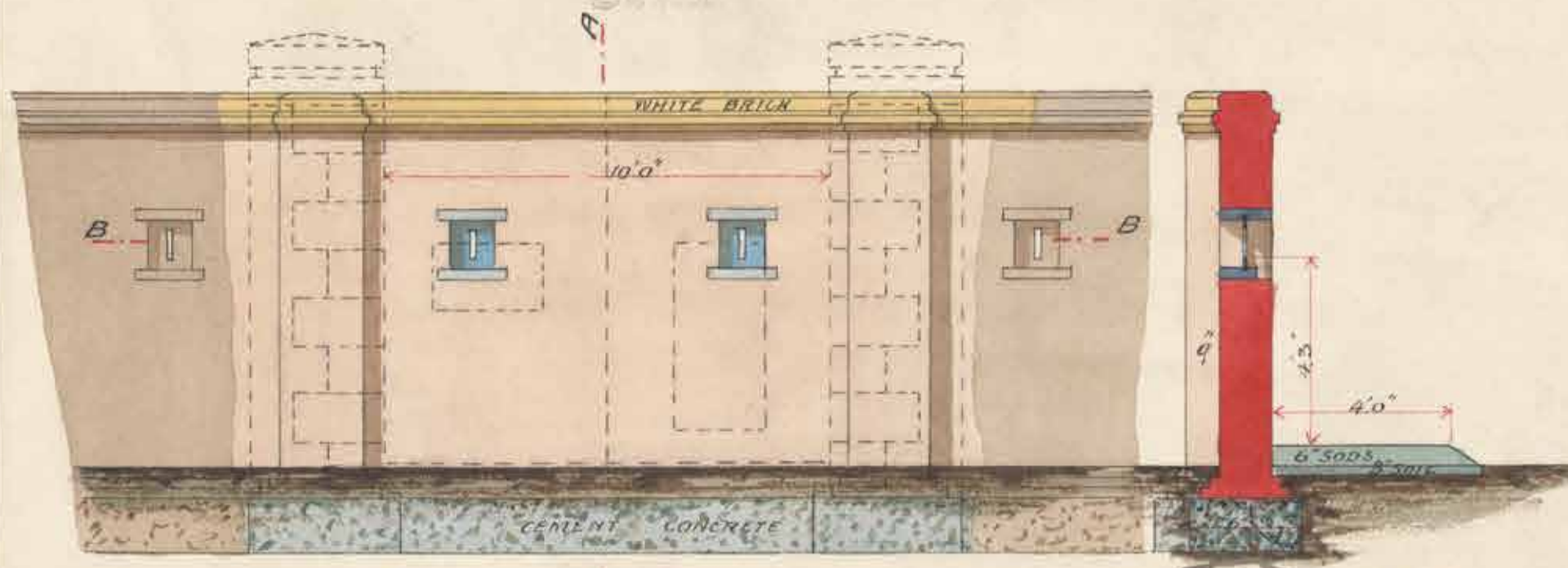
DRAWING



GUN N^o 5
6" 5 1/2 TON B.L.
ON H.P. CARRIAGE

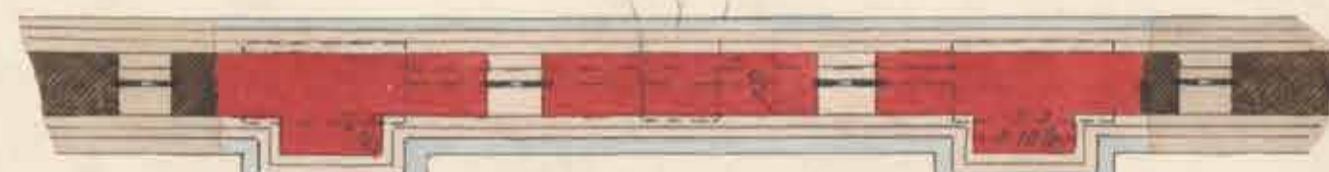
Note Recessed Frames inside Magazines, are Gun Metal

BUILDING UP OF GATEWAY.

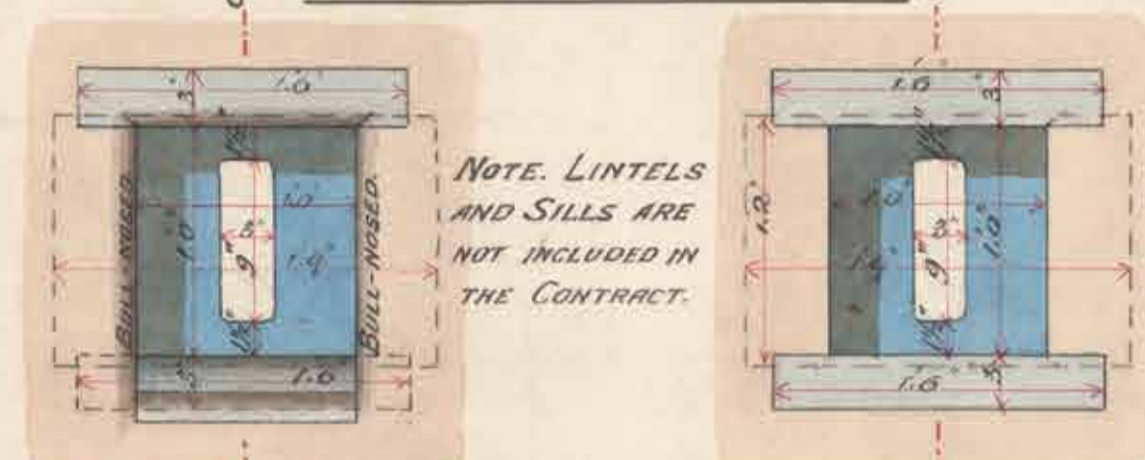


OUTSIDE ELEVATION. SECTION, A-A.

SCALE, 1/4 INCH = 1 FOOT.



SECTIONAL PLAN, B-B.

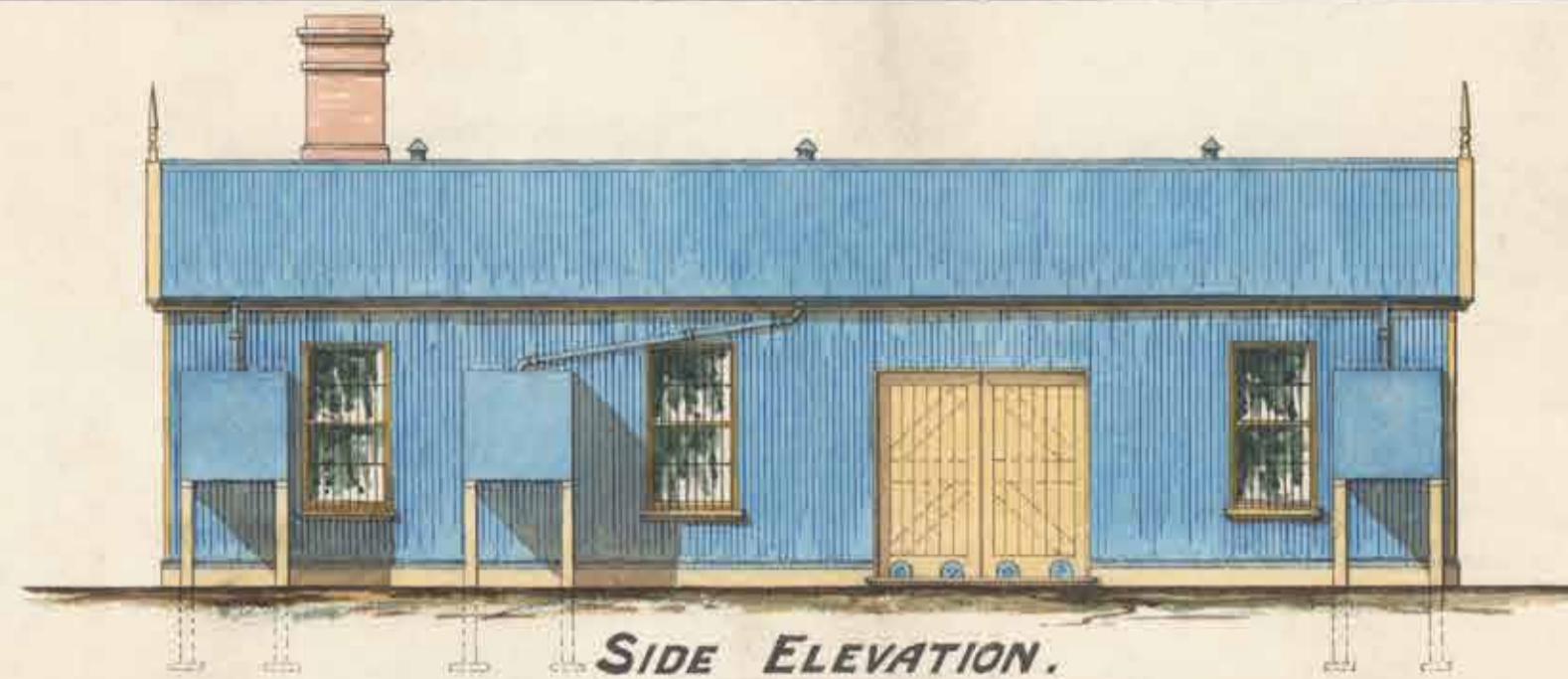


INSIDE ELEVATION. OUTSIDE ELEVATION. SECTION, C-C.

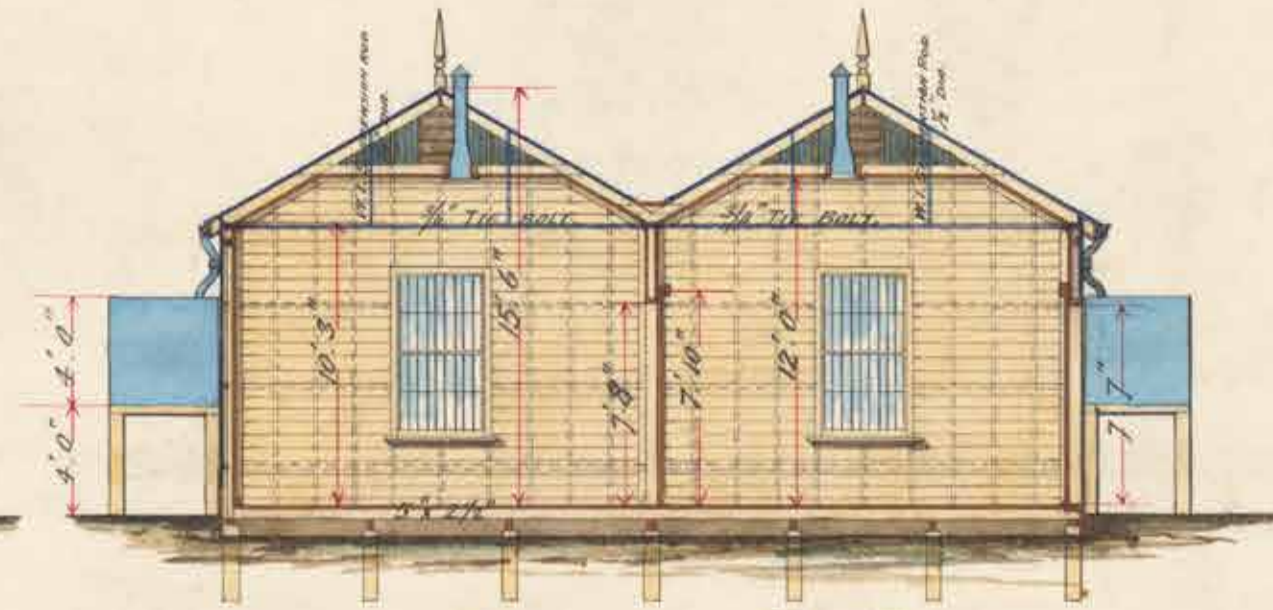
DETAILS OF LOOPHOLE.

SCALE, 1 INCH = 1 FOOT.

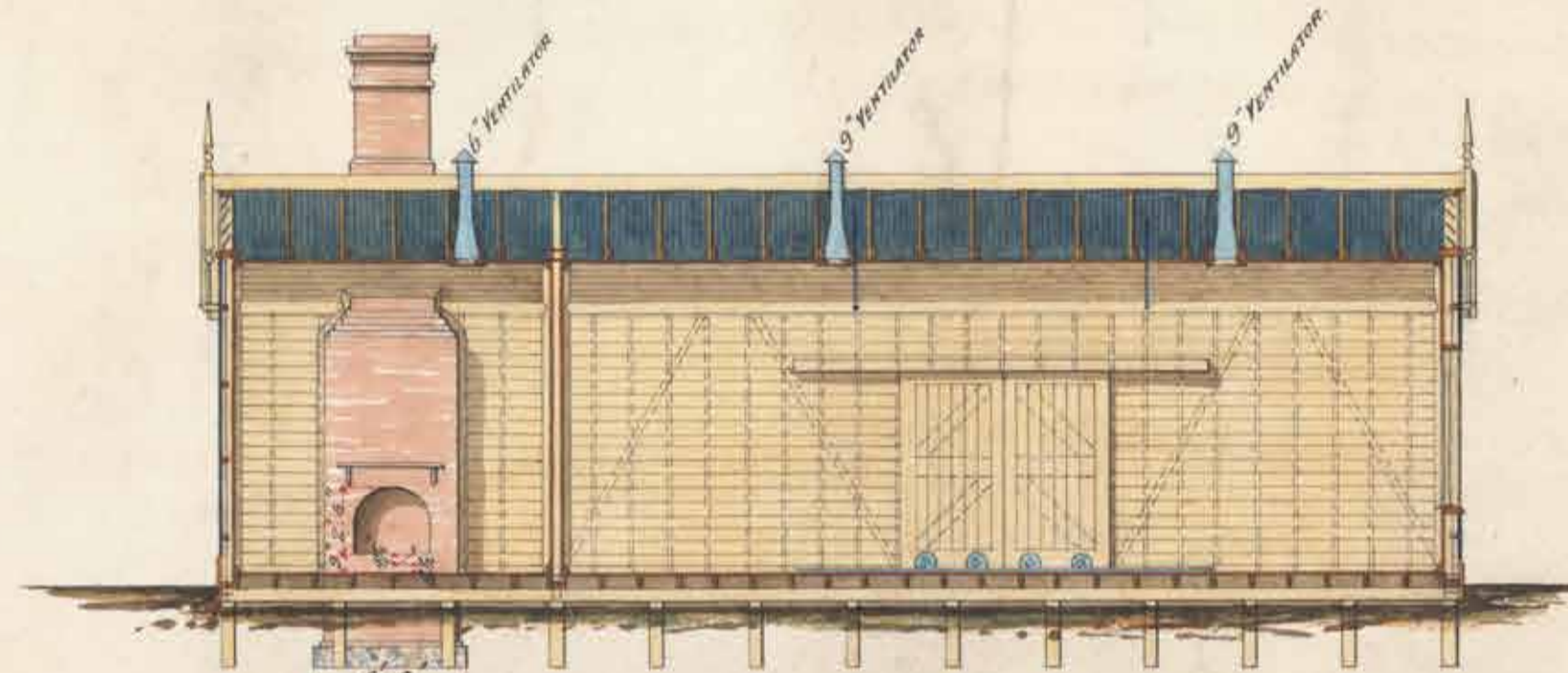
VICTORIAN DEFENCES. QUEENSLIFF BATTERY - NEW BUILDINGS ETC.



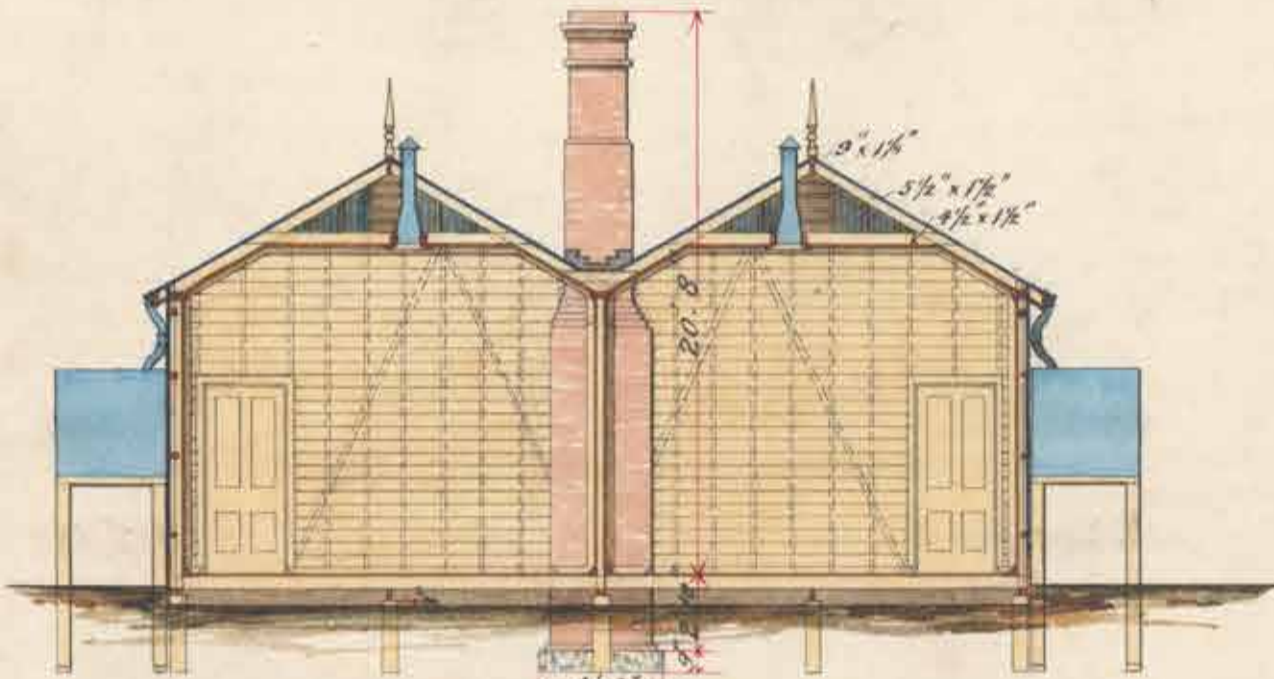
SIDE ELEVATION.



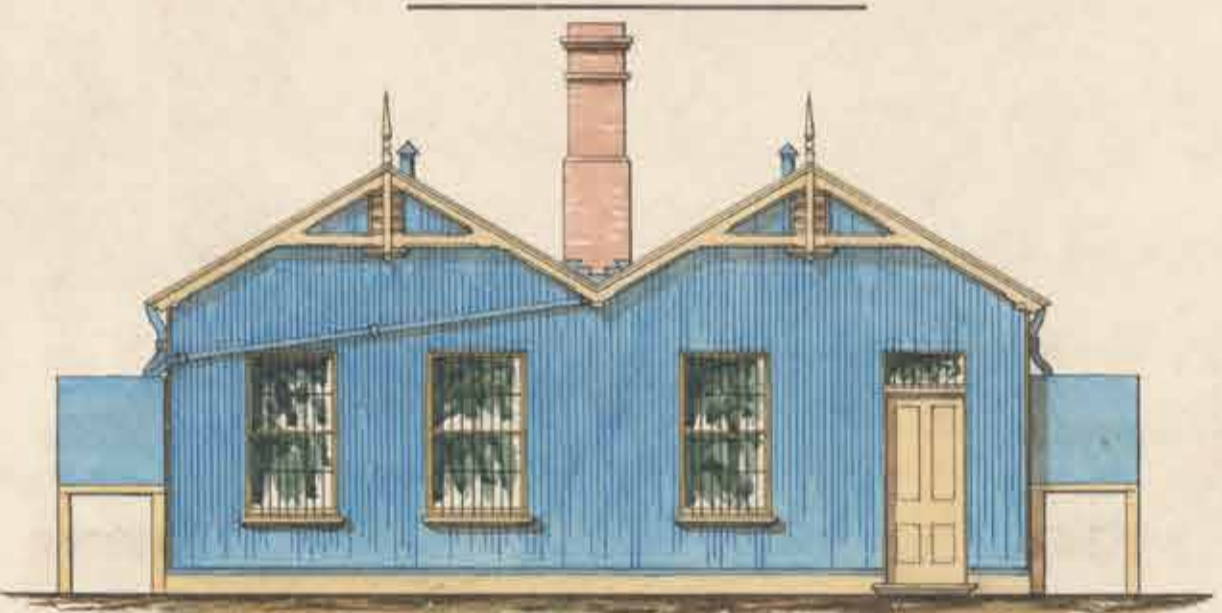
SECTION, D-D.



LONGITUDINAL SECTION, E-E.



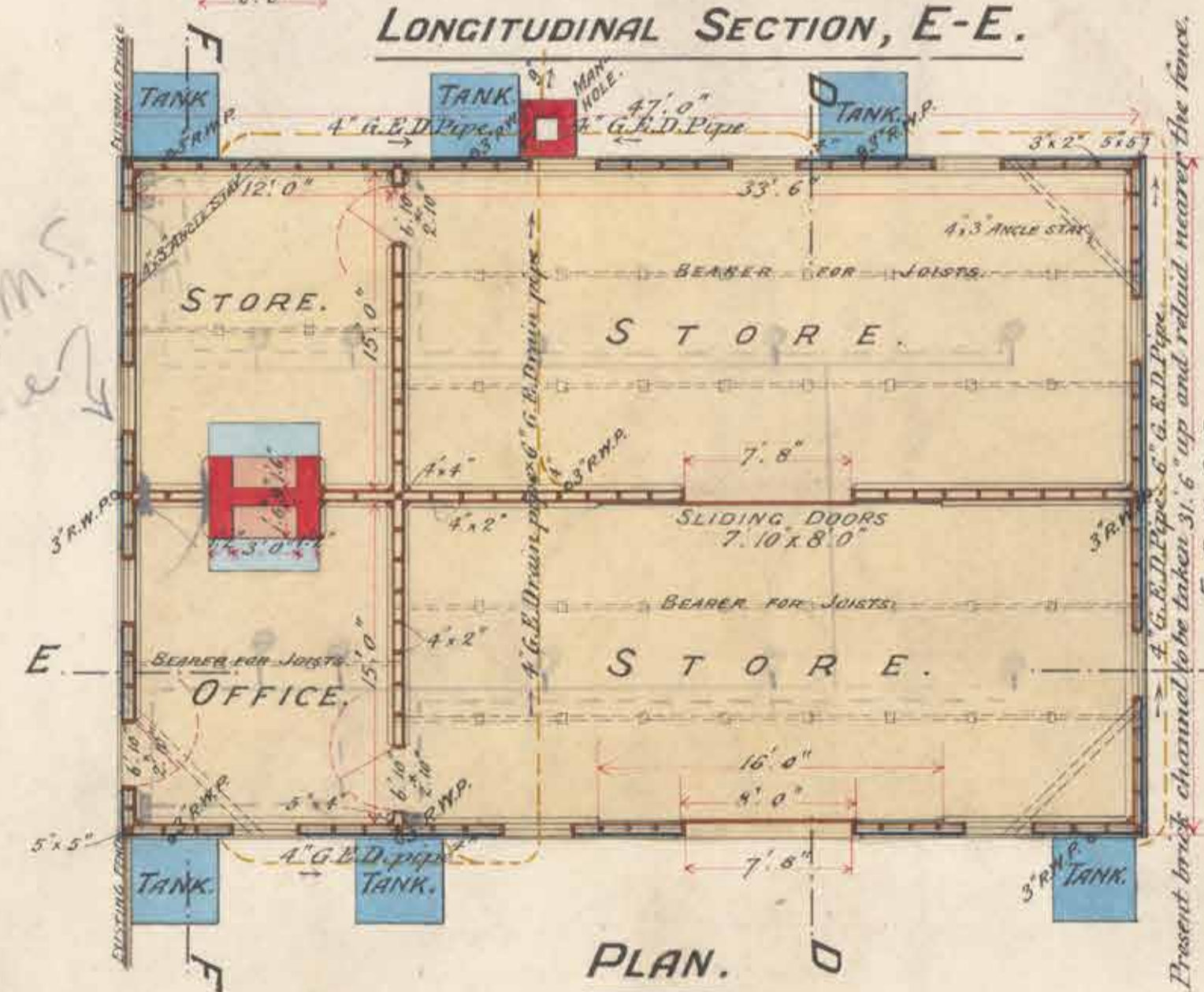
SECTION, F-F.



END ELEVATION.

BATTERY STORE.

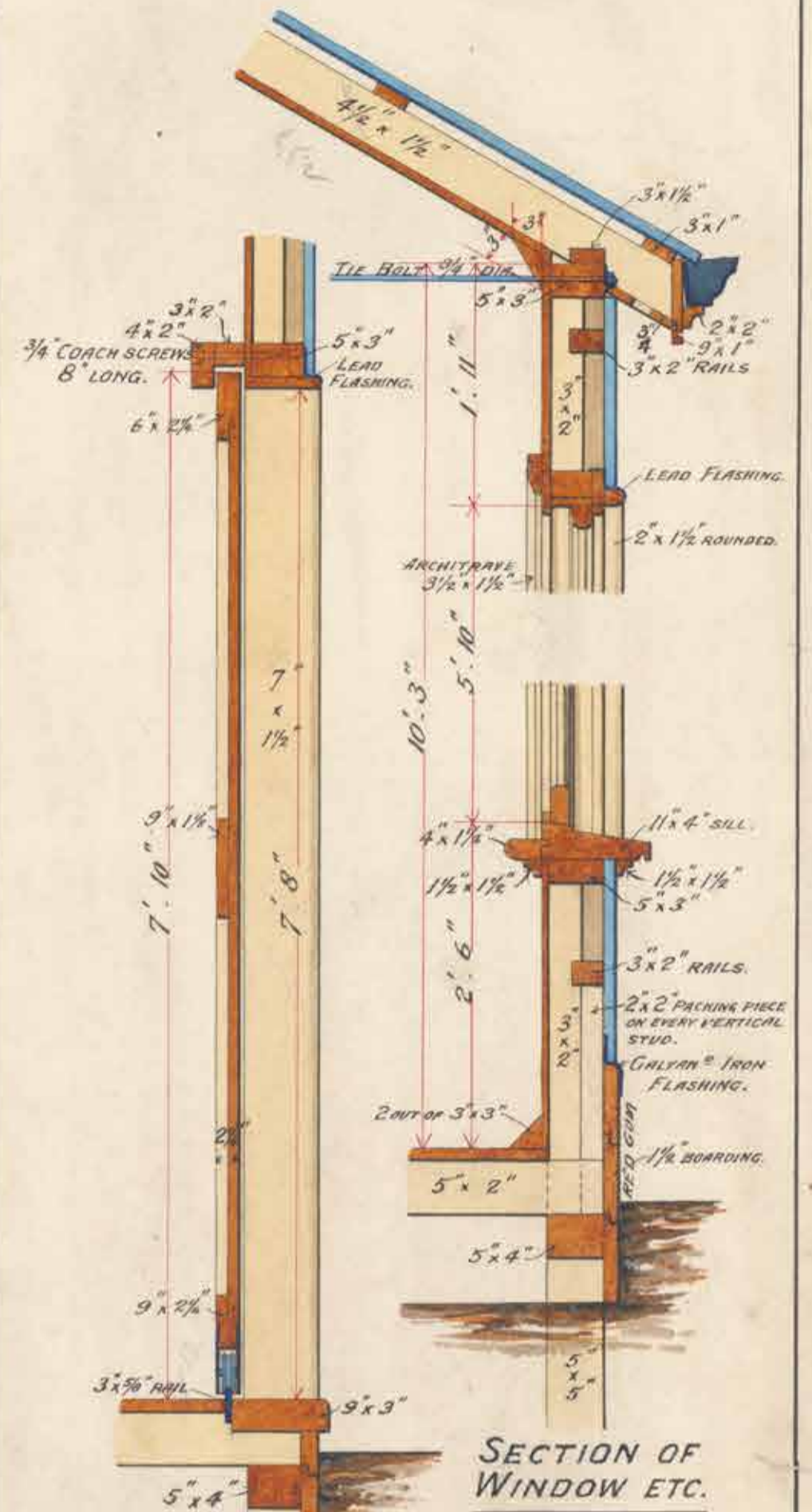
SCALE, 8 FEET = 1 INCH.



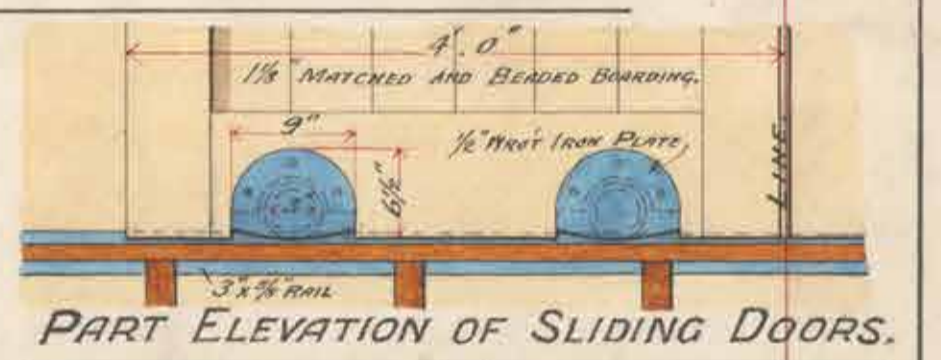
PLAN.

DRAWING No. 71 DETAILS OF BATTERY STORE.

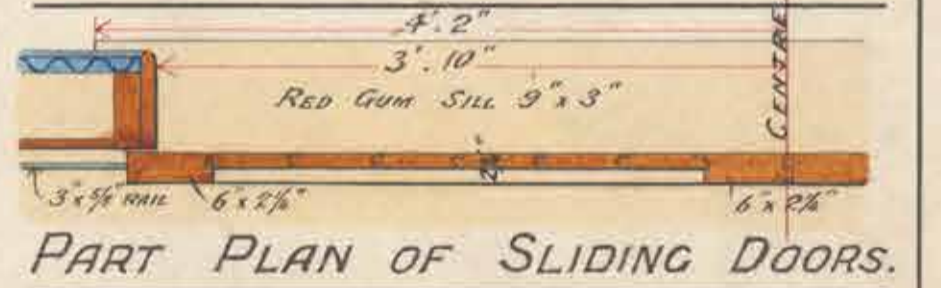
SCALE, 3/4 INCH = 1 FOOT.



SECTION OF SLIDING DOORS.



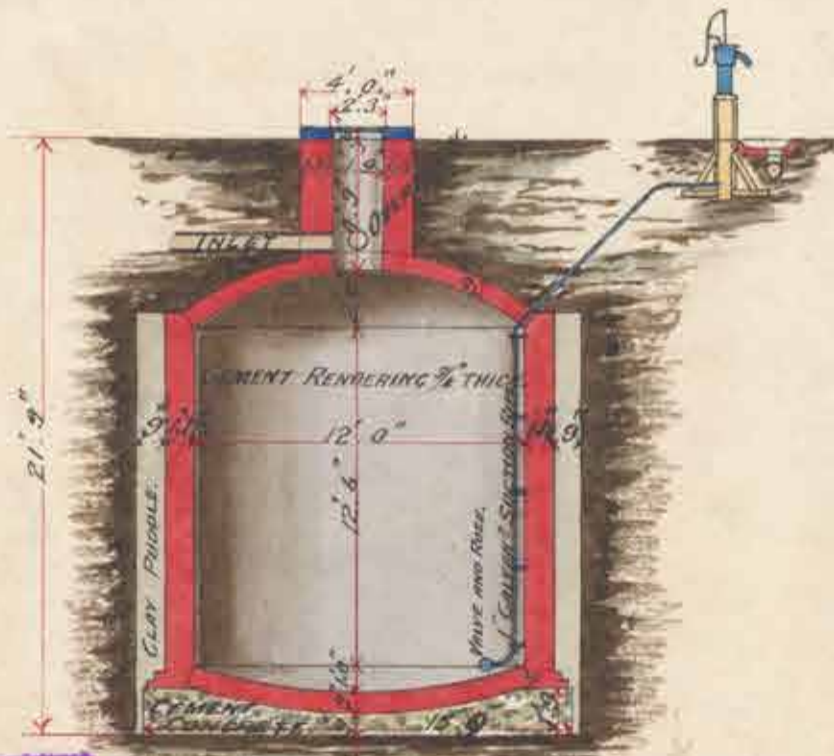
PART ELEVATION OF SLIDING DOORS.



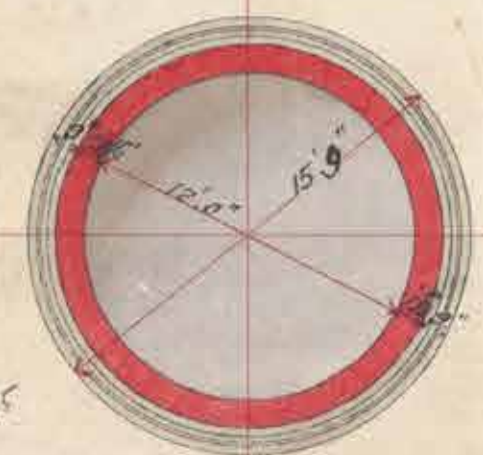
PART PLAN OF SLIDING DOORS.

9,000 GALLON TANK.

SCALE, 8 FEET = 1 INCH.



VERTICAL SECTION.

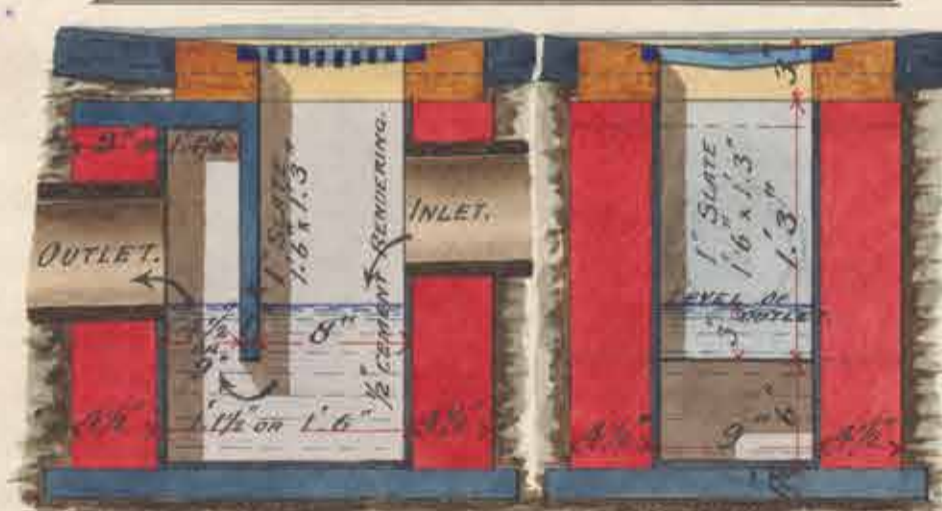


SECTIONAL PLAN.

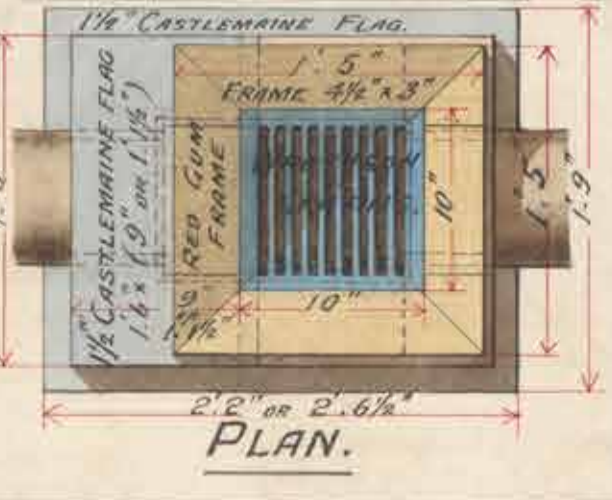
DETAILS OF CESSPITS.

SCALE, 1 INCH = 1 FOOT.

REQUIRED - No 5 of 18 x 9" and No 7 of 14 x 9"



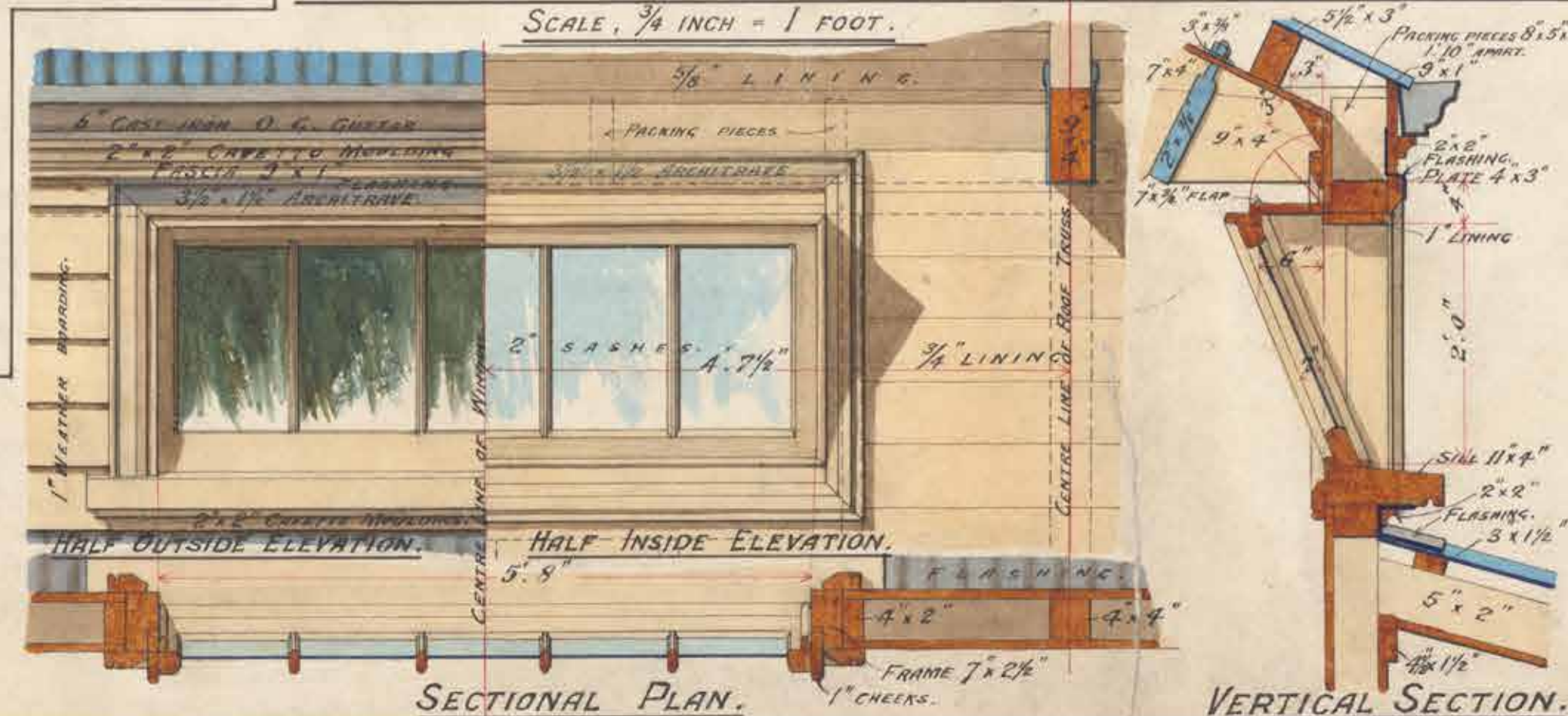
LONGITUDINAL SECTION, CROSS SECTION.



PLAN.

DETAILS OF WINDOWS AND EAVES OF DINING ROOM.

SCALE, 3/4 INCH = 1 FOOT.

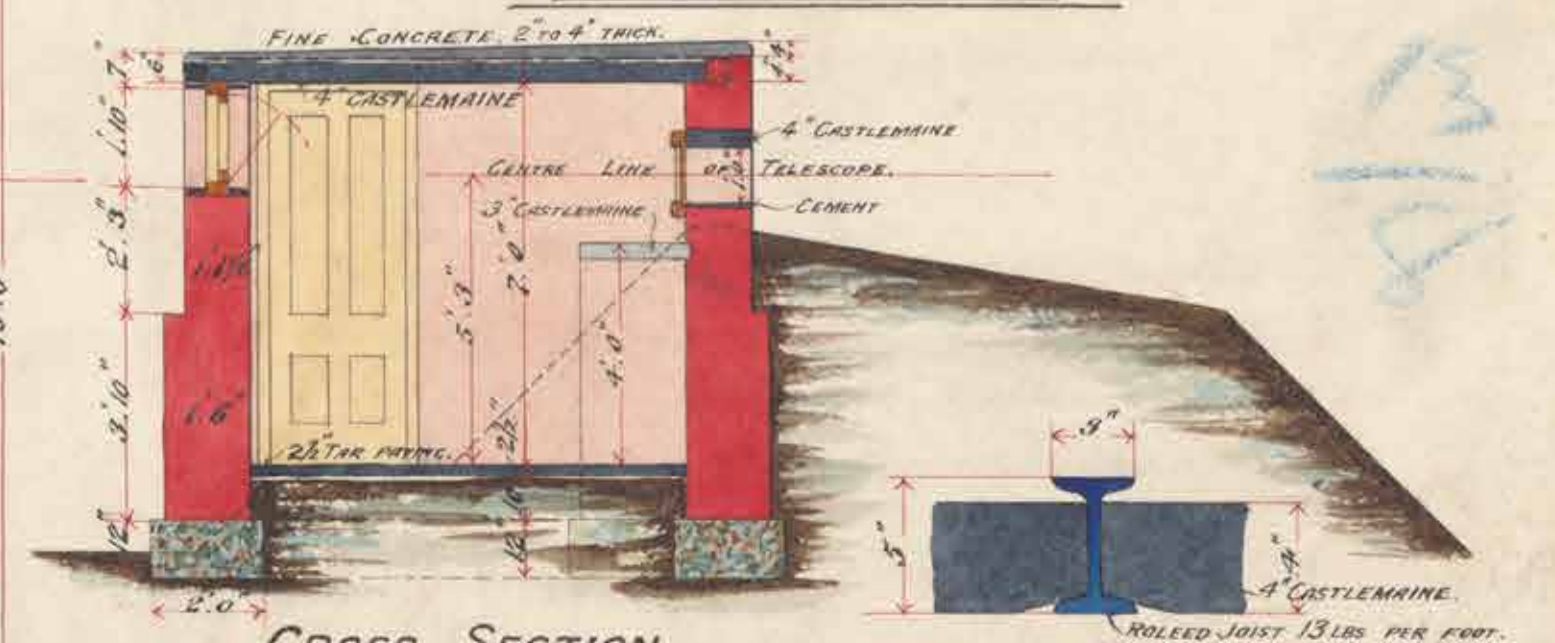


SECTIONAL PLAN.

VERTICAL SECTION.

COVER FOR POSITION FINDER.

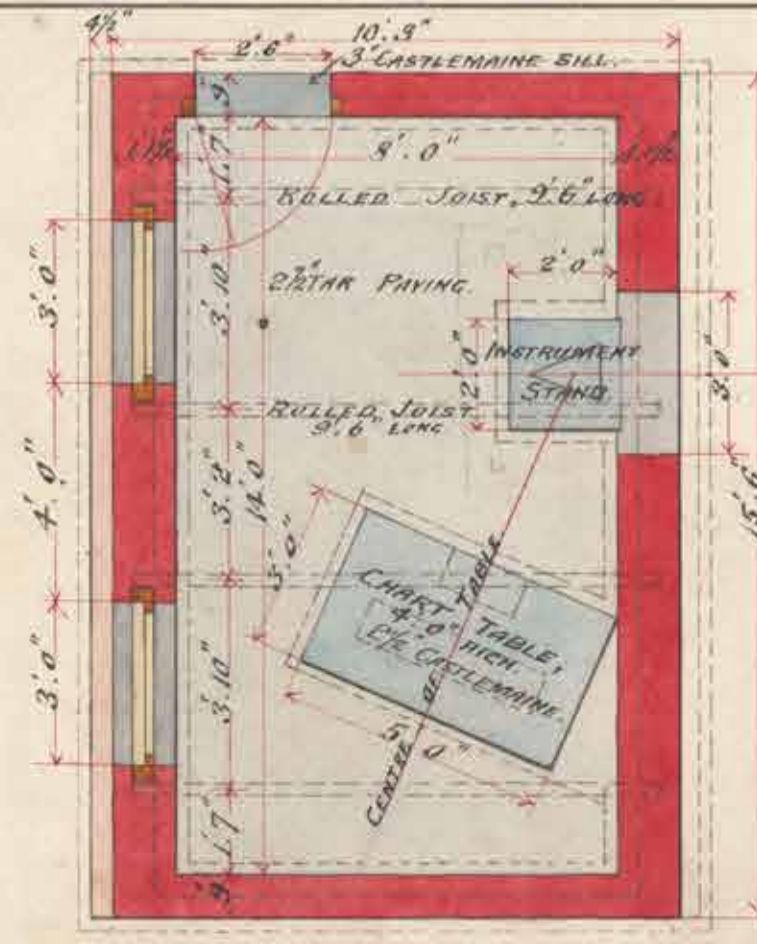
SCALE, 4 FEET = 1 INCH.



CROSS SECTION.

SECTION OF ROLLED JOIST.

SCALE 1/2 INCH = 1 FOOT.



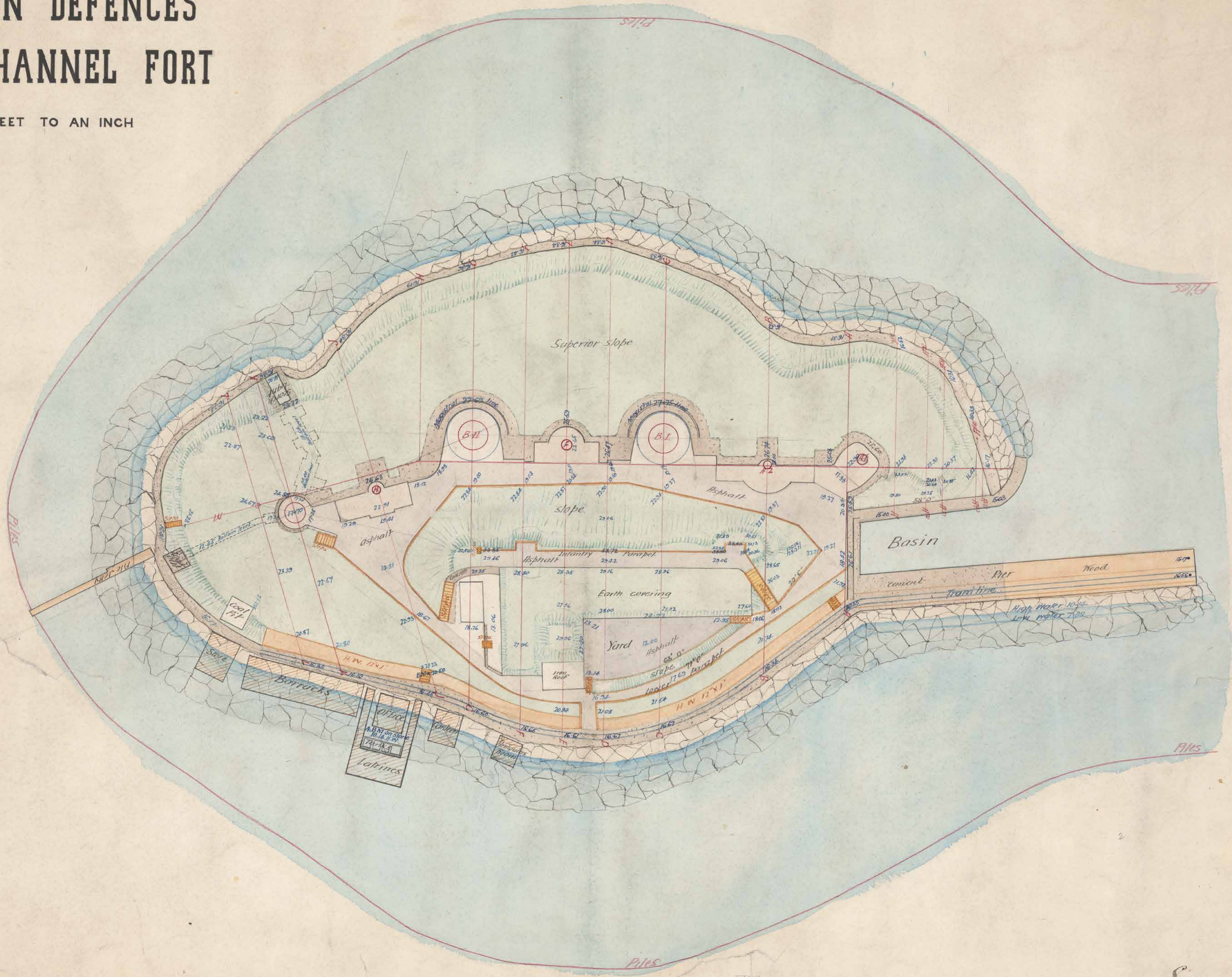
PLAN.

This is one of the plans referred from my contract dated 8/12/87

8

VICTORIAN DEFENCES SOUTH CHANNEL FORT

SCALE 20 FEET TO AN INCH



701

Surveyed by J. M. ...

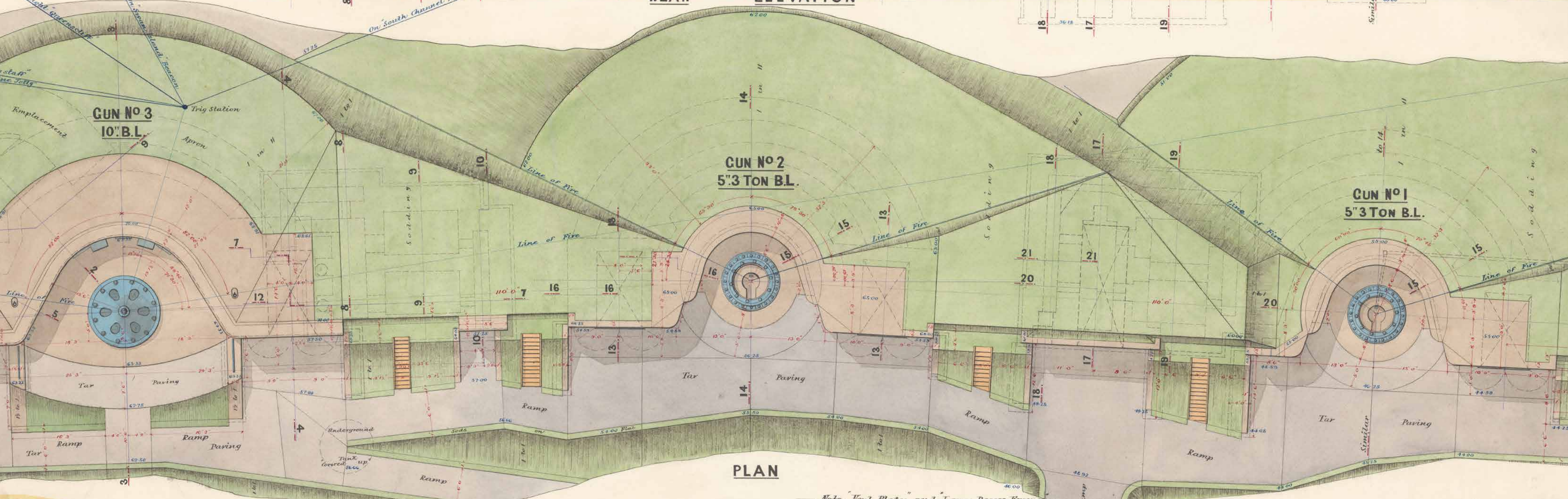
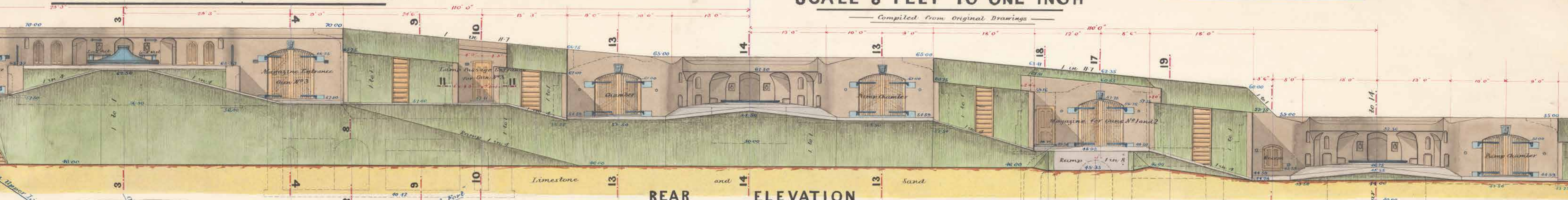
VICTORIAN DEFENCES

POINT FRANKLIN BATTERY

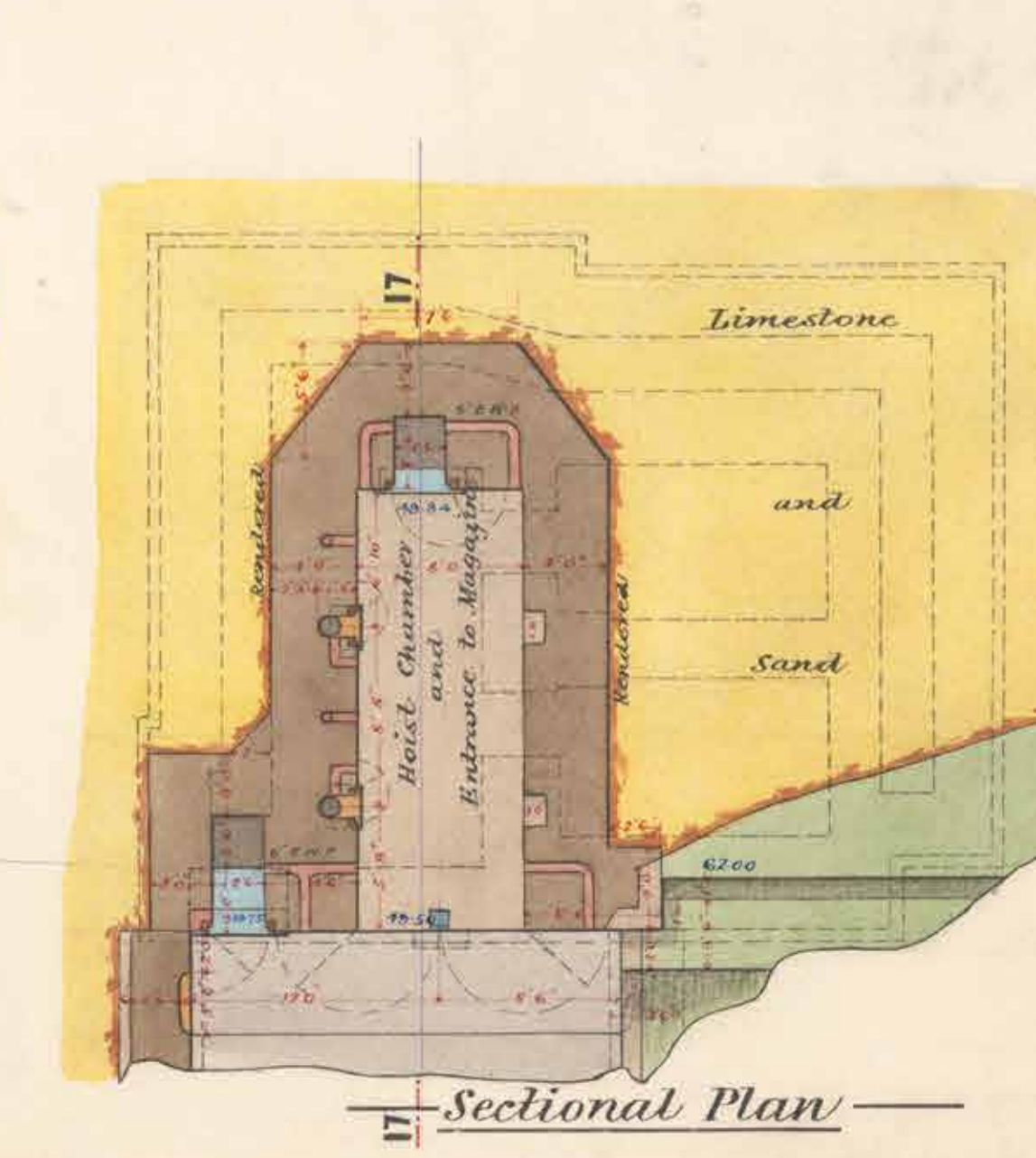
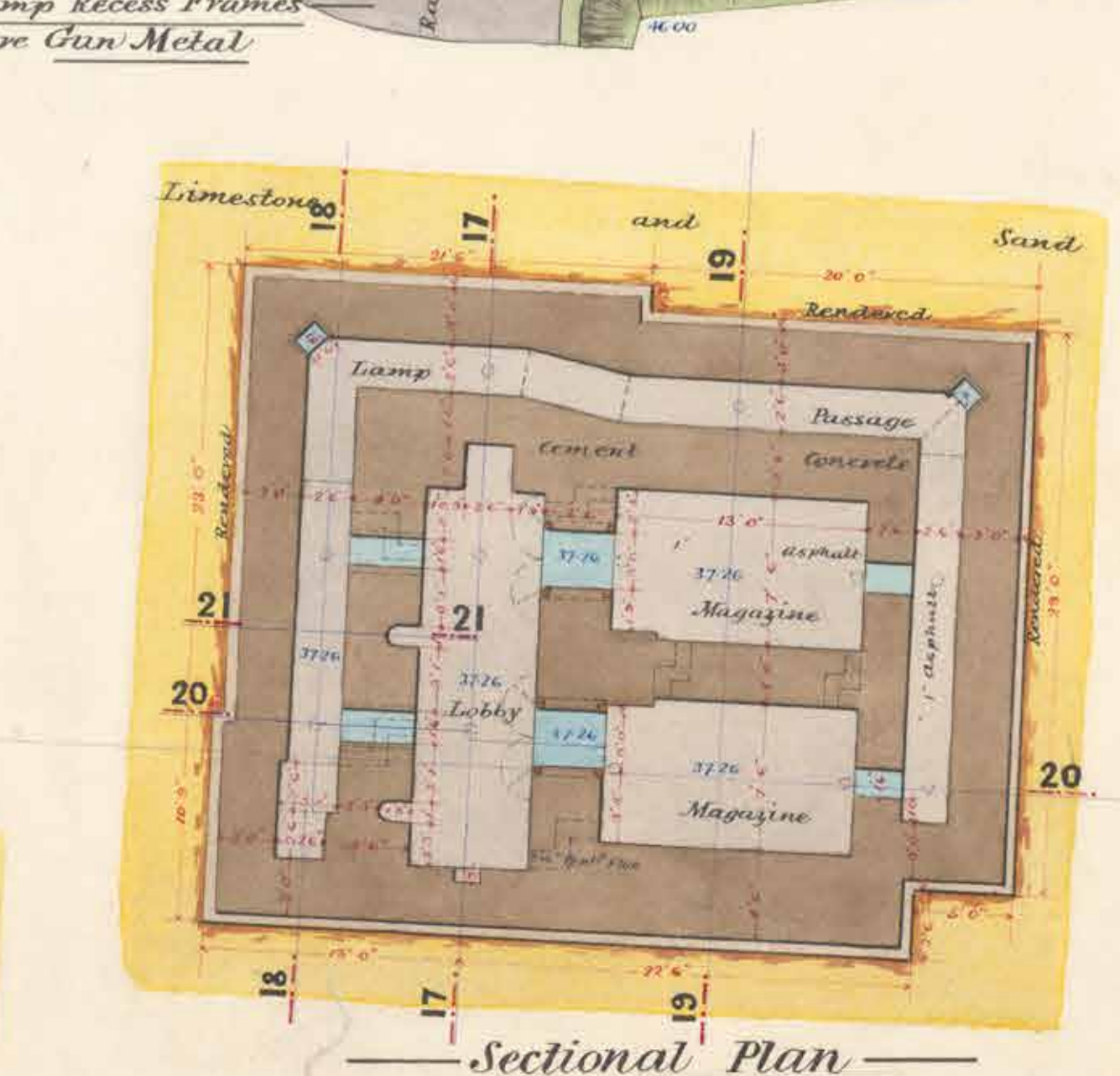
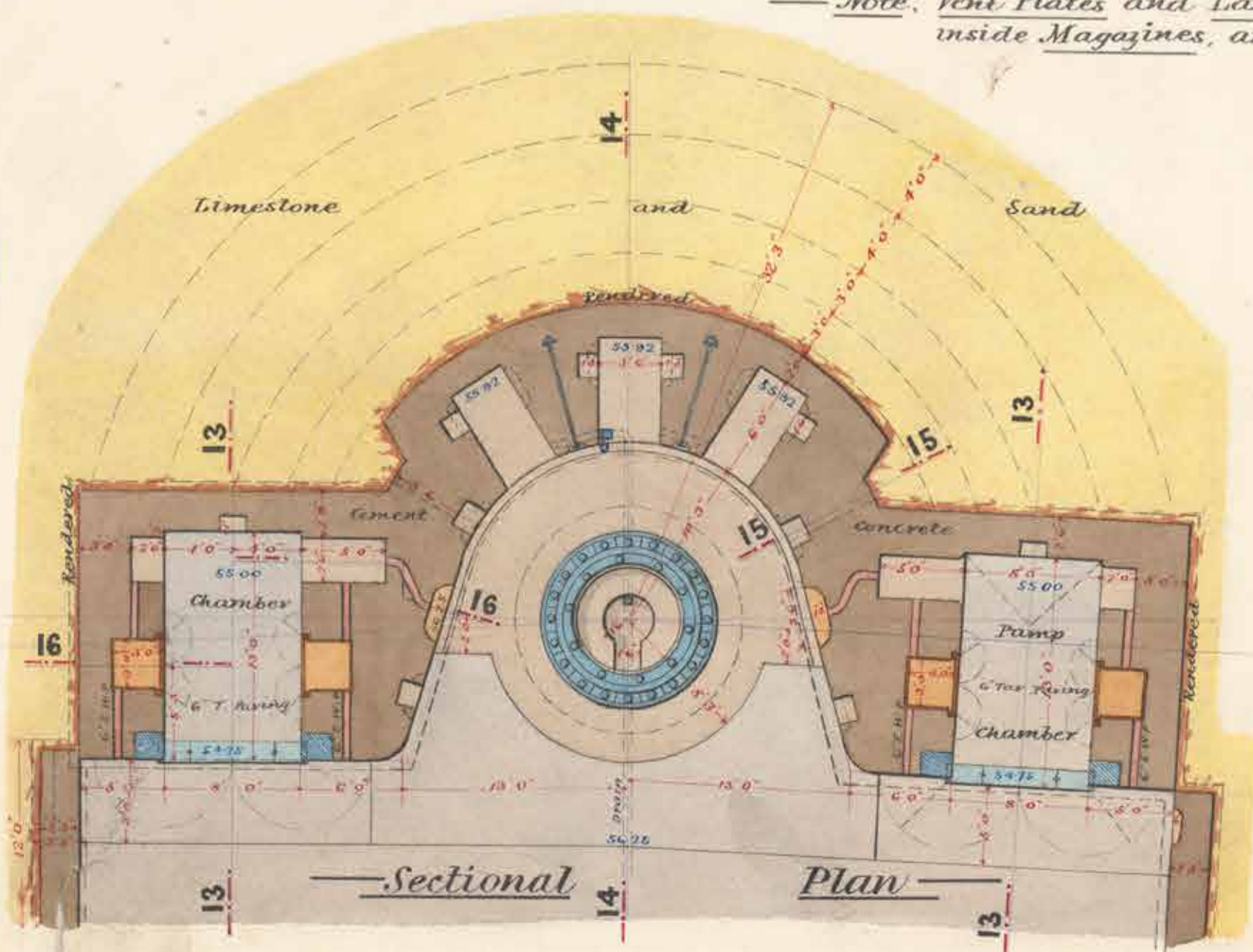
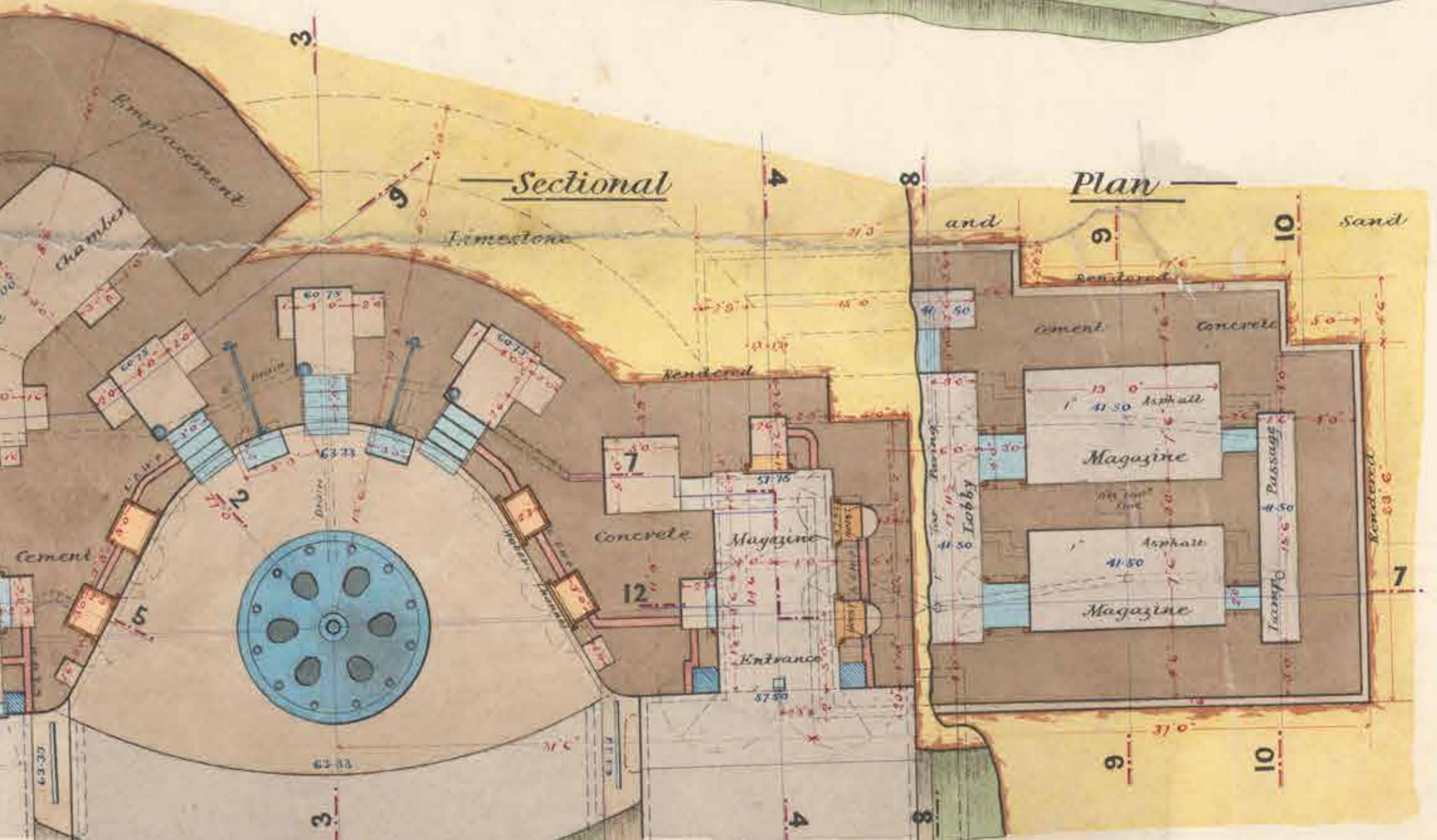
CUNS NOS 1, 2, AND 3.
 SCALE 8 FEET TO ONE INCH
 Compiled from Original Drawings

Note
 Levels given above Ordinary Low Water
 Ordinary Rise and Fall, 3 Feet

DRAWING NO.



Note: Vent Plates and Lamp Recess Frames inside Magazines, are Gun Metal



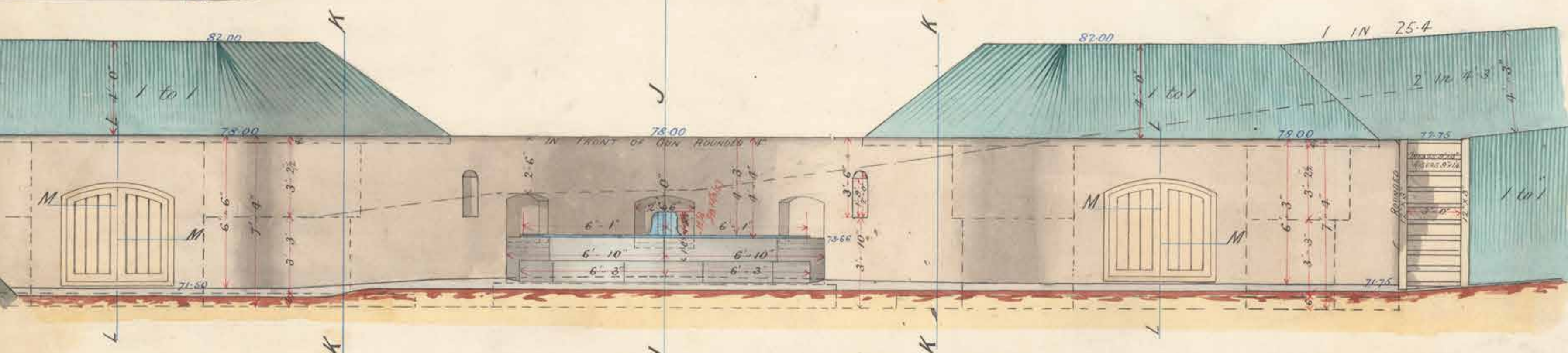
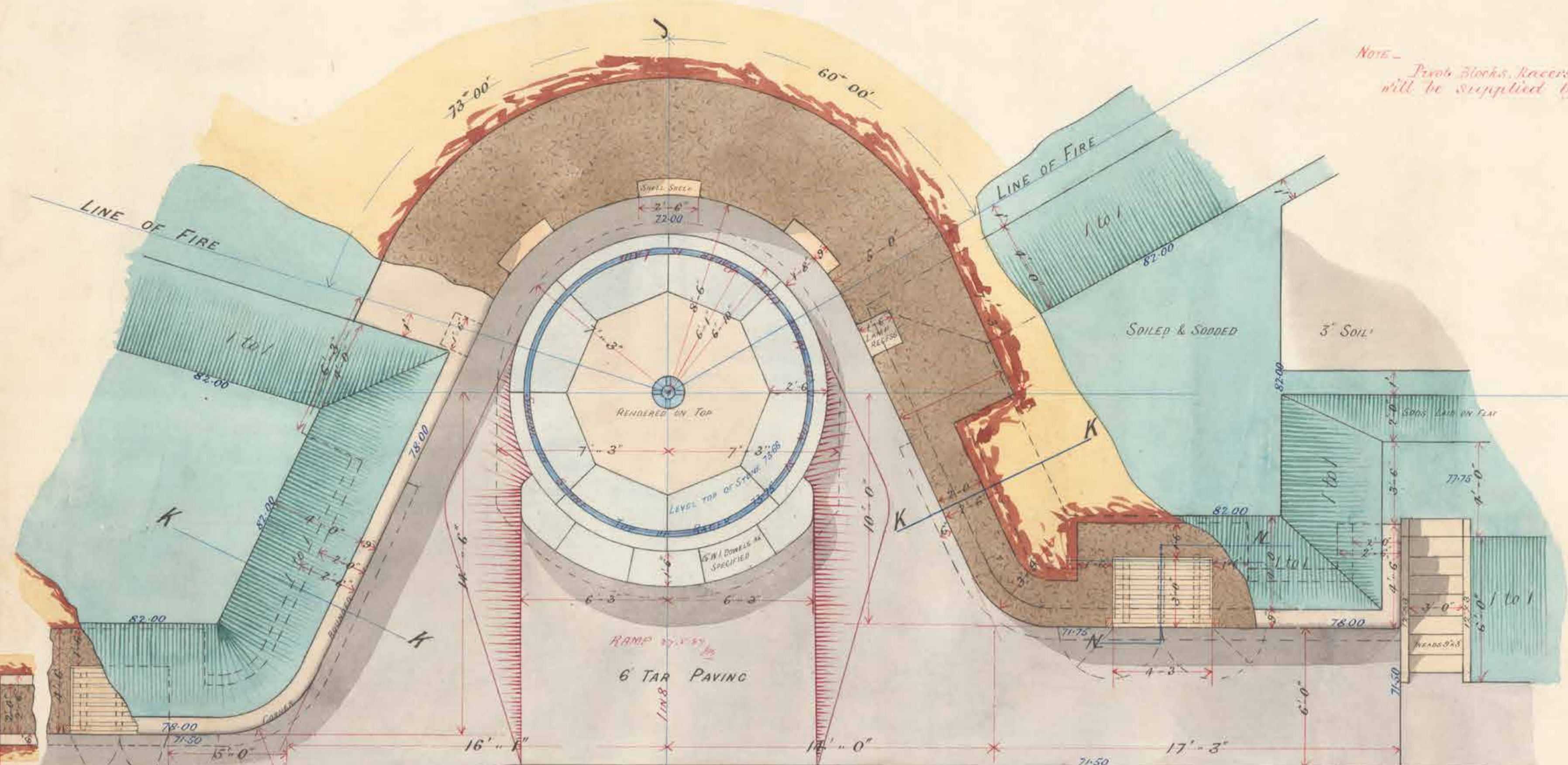
WARRNAMBOOL BATTERY

Two 80^{PR} M.L. GUNS

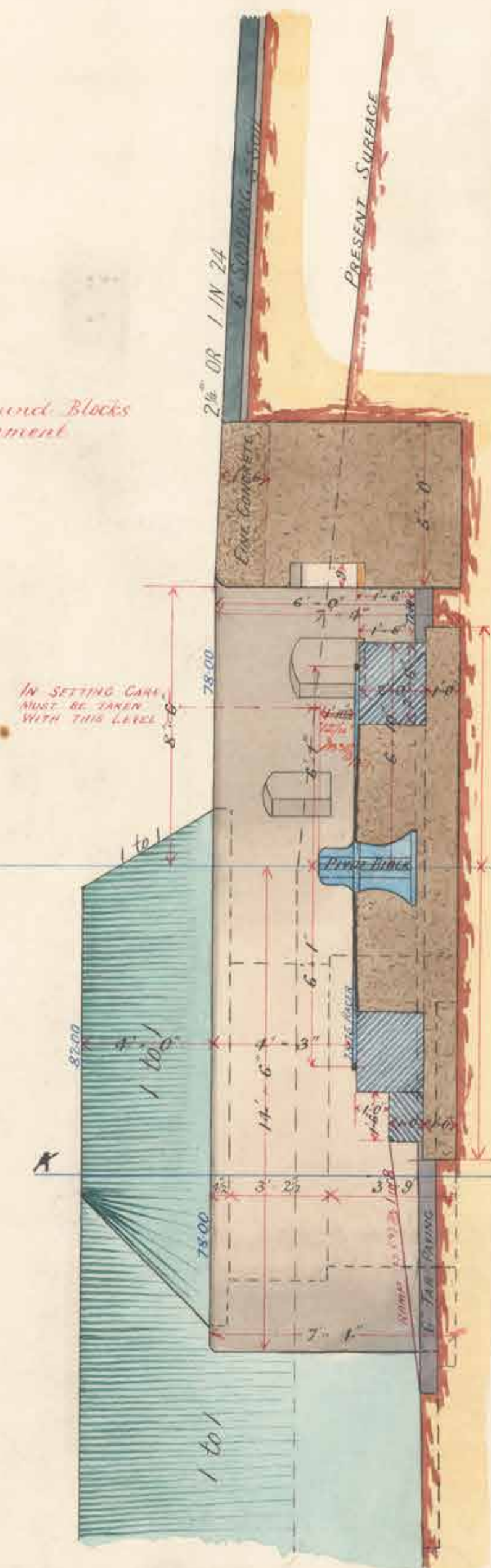
SCALE 4 FEET = 1 INCH

DETAIL DRAWING

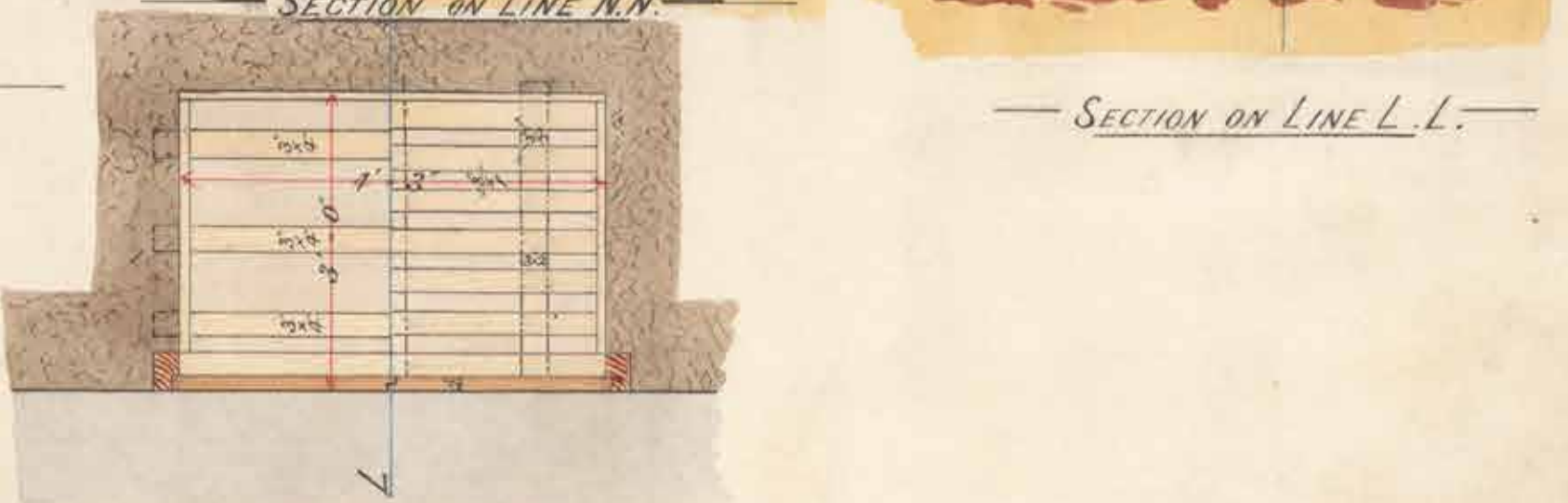
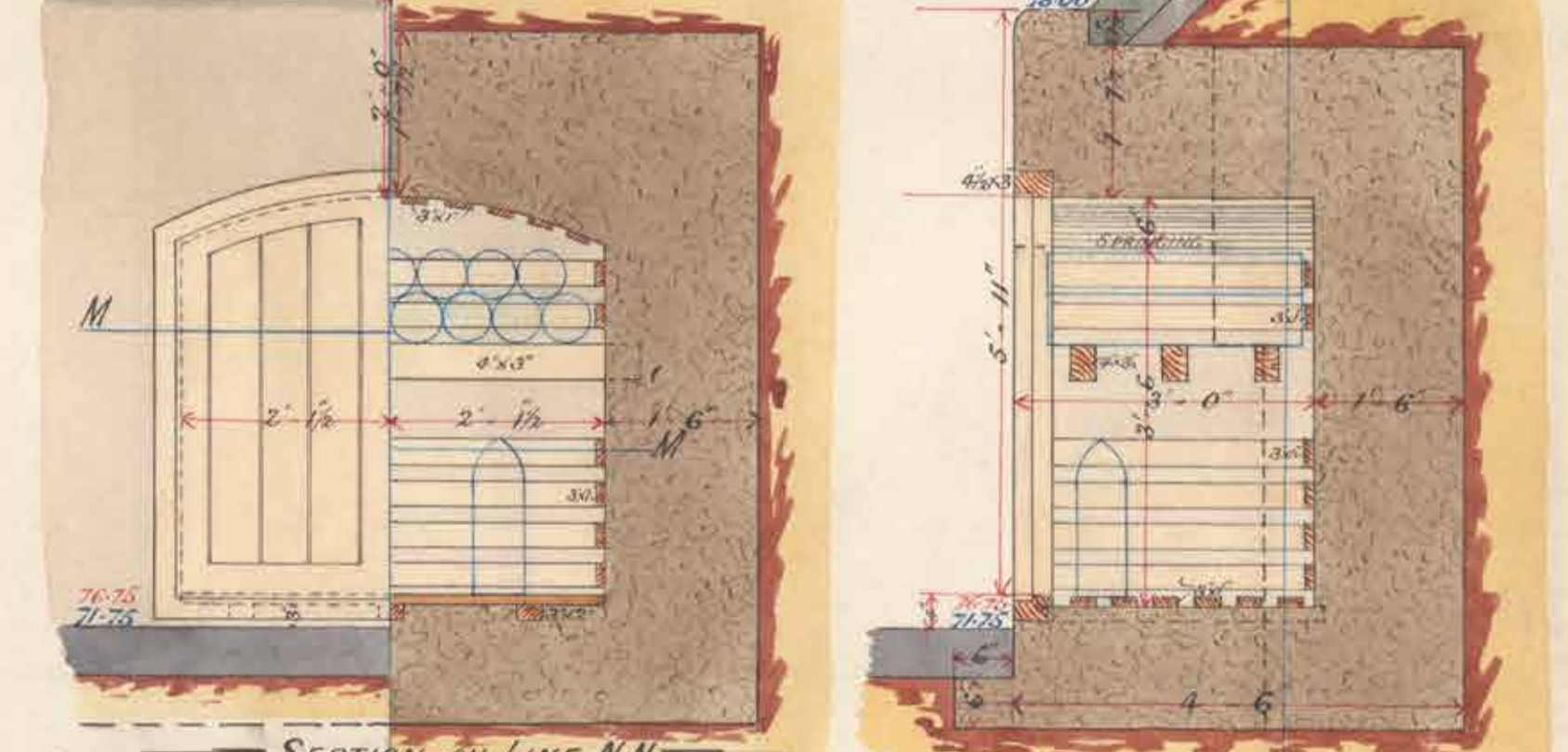
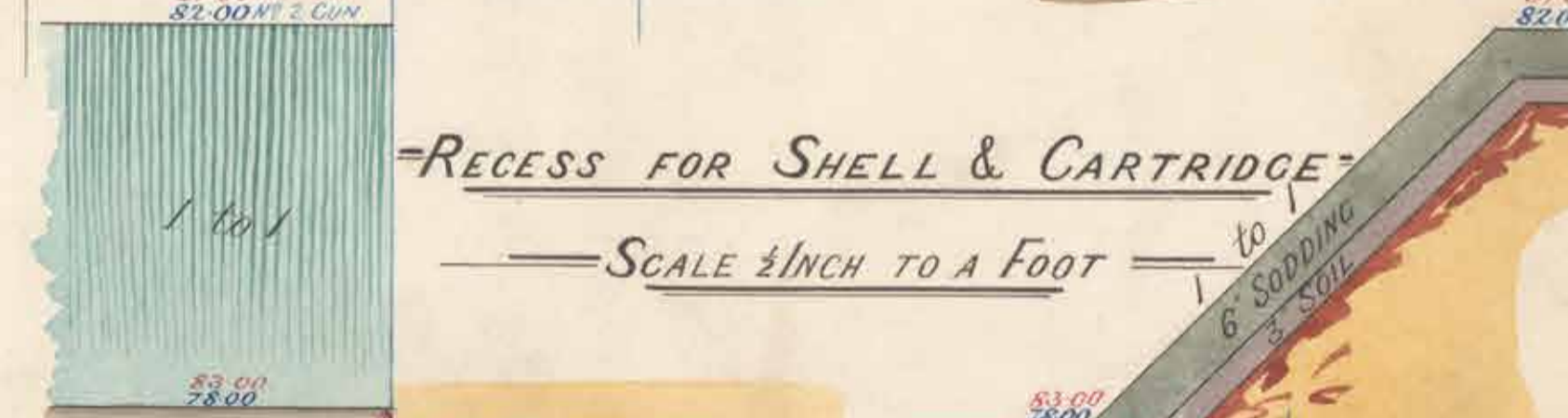
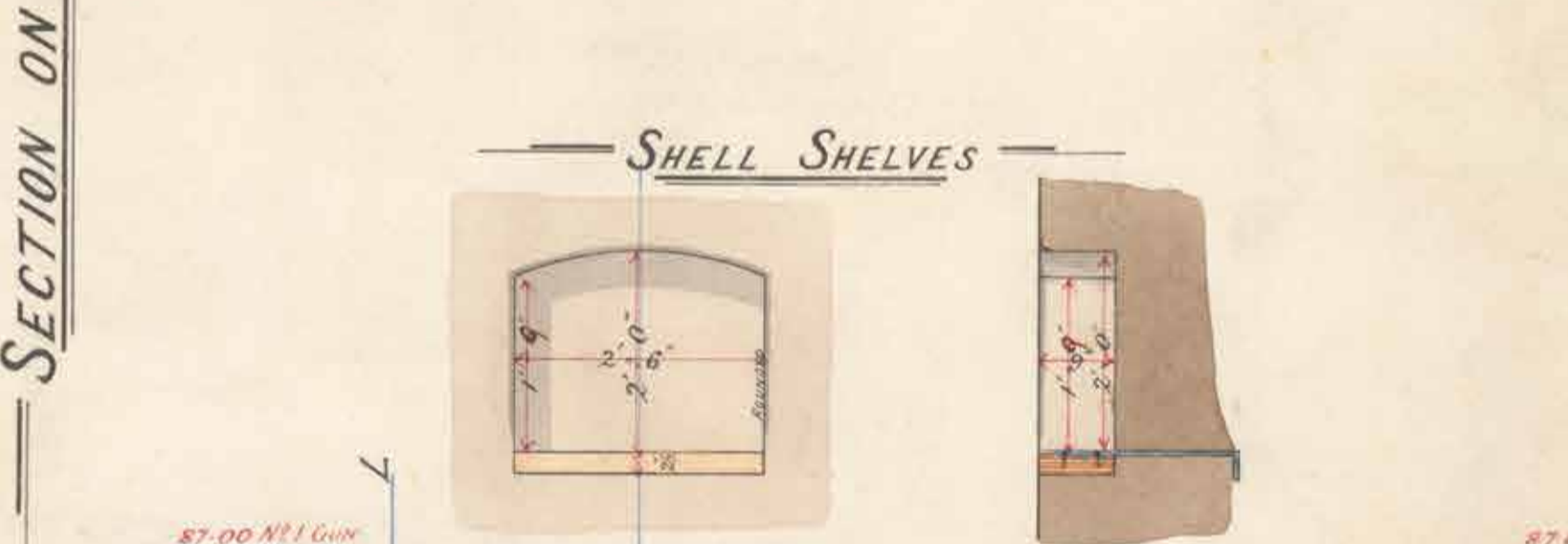
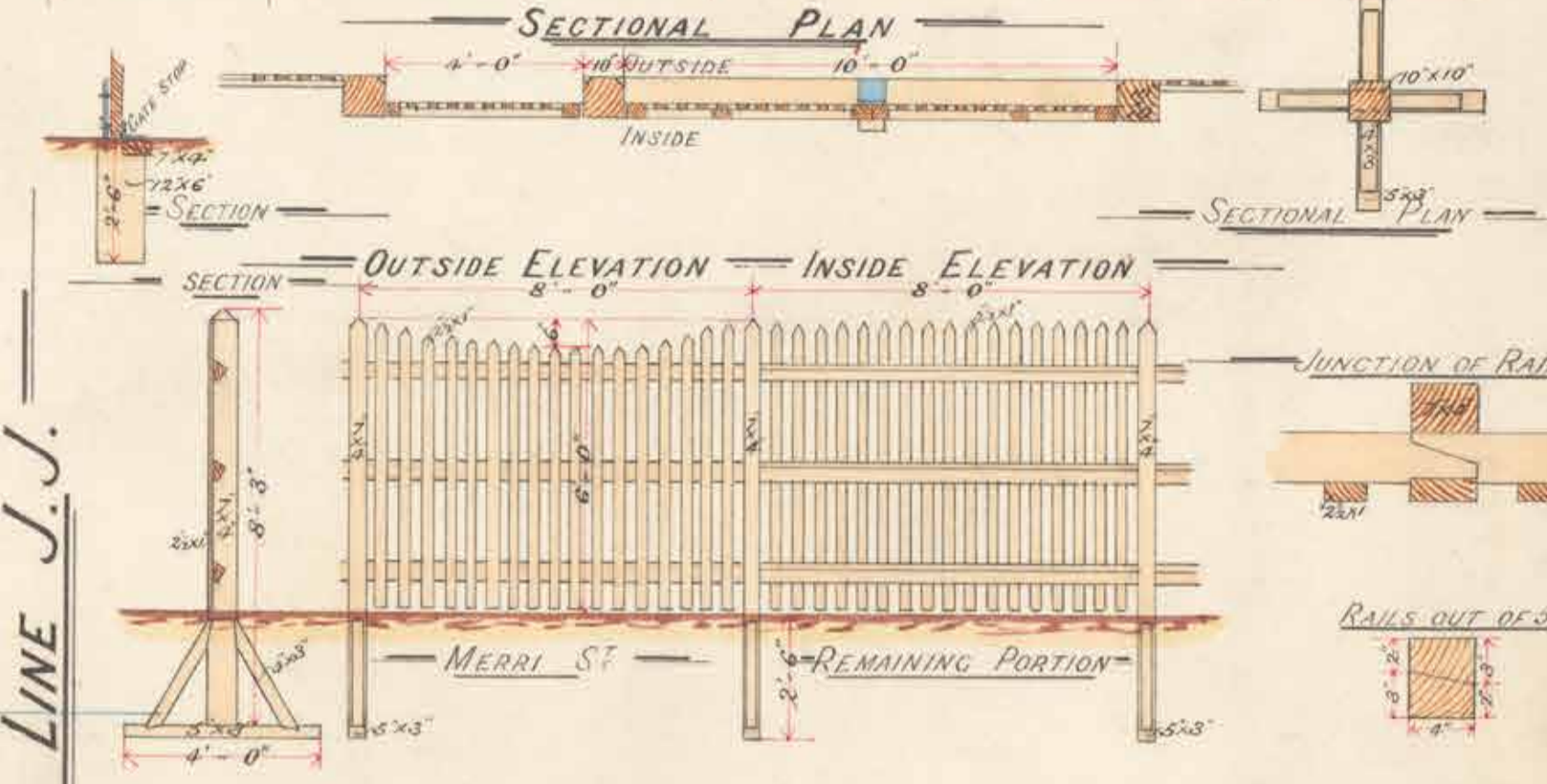
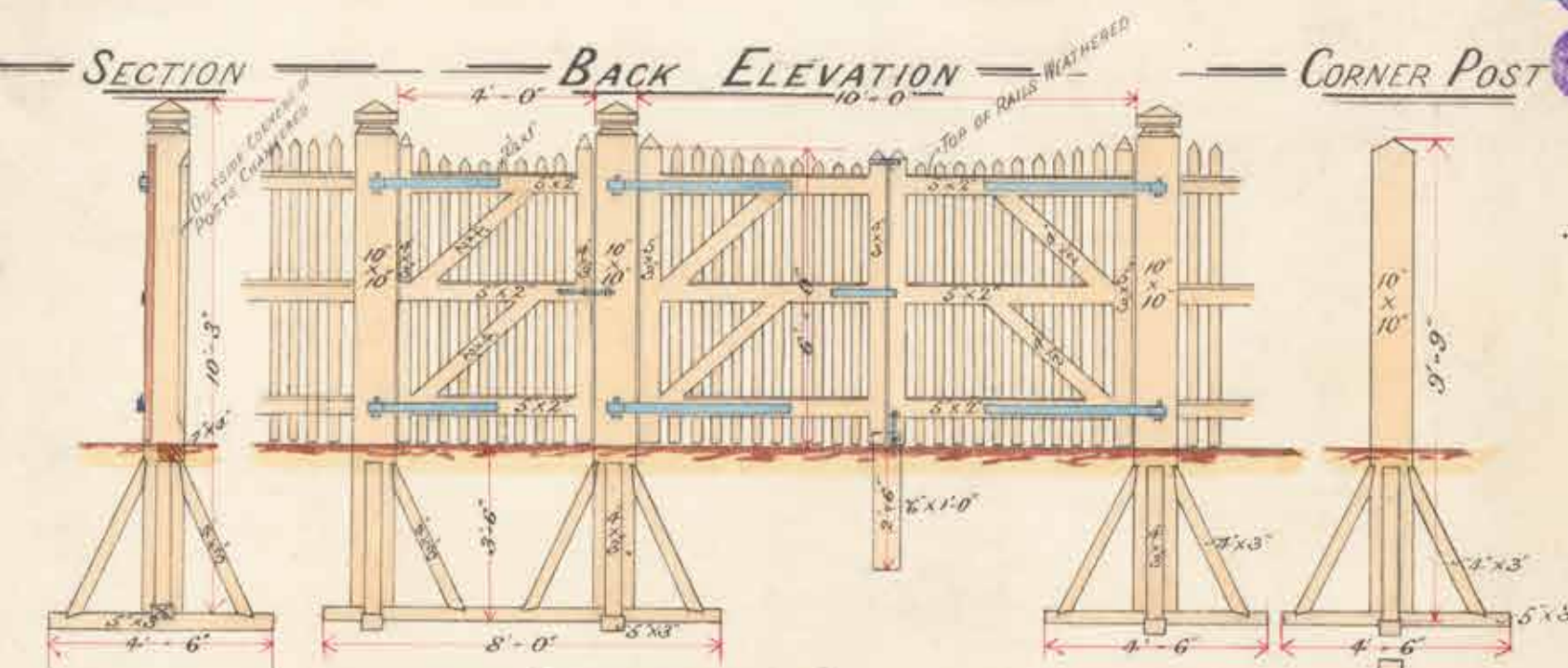
PLAN OF EMPLACEMENT NO 2



REAR ELEVATION



SECTION ON LINE K.K.



9/13

Datum 85.71 Below B.M. on bottom step of Upper Lighthouse

Queenscliff July 18th 87
H. G. Puddle
47 Years

11/10